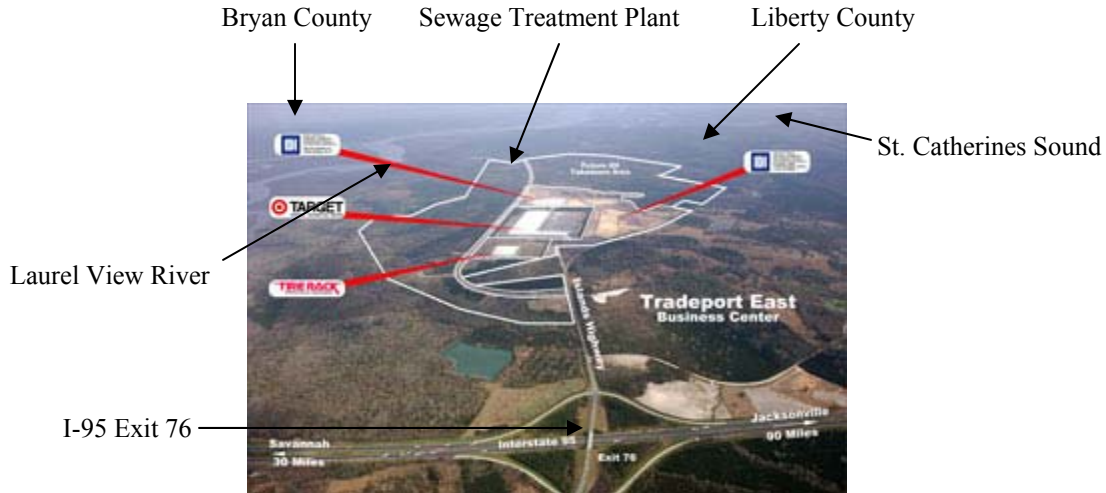


Liberty County Industrial Authority Wastewater Treatment Plant Fact Sheet

Owner/Developer: The Liberty County Industrial Authority also known as the Liberty County Development Authority (the “LCIA”)

Project: 3 million gallon per day wastewater treatment facility

Location: Liberty County, Georgia, Sunbury Road, Tradeport East, east of the Target Distribution and Industrial Development International/Kajima facilities off of I-95 exit 76



Budget: \$30 million +/-

Contractor: CH2M Hill

Treatment Capacity: 3 million gallons per day

Service Capacity: 10,000 Equivalent Residential Units (ERU)/Homes

Capacity Reserved/Committed: 350 ERUs to Industrial Development International/Kajima

Wastewater Disposal Plan: 3 million gallons per day of wastewater into the Laurel View River

Further Discharge Details: The LCIA seeks a permit from the Georgia Environmental Protection Division (“EPD”) to discharge up to 3 million gallons per day of wastewater into the Laurel View River in Liberty County, Georgia, through the requested approval of Draft Permit Number GA0039101 dated October 17, 2008 (the “LCIA Draft Permit”).

Issues: Approval of the LCIA Draft Permit by the EPD would have a significant, long-term impact on the St. Catherines Sound estuary (the “St. Catherines Sound Estuary”), the Atlantic Ocean, and the saltwater marshlands, sounds and the connected ecosystems of the State of Georgia. Therefore, it is appropriate and reasonable to request that the EPD hold an informational meeting followed by a public hearing on a separate date to allow important issues to be considered prior to the issuance of this unique and unprecedented wastewater discharge permit into a saltwater estuary.

While water quality matters have been addressed by the EPD and the LCIA in the LCIA Draft Permit, the impact of treated wastewater discharge derived from a freshwater aquifer into the saltwater St. Catherines Sound Estuary has not been adequately addressed. As part of its process, it is vital that the EPD consider some very basic and unique elements and attributes of the St. Catherines Sound Estuary, the Laurel View River, and the LCIA’s wastewater project prior to the issuance of a precedent setting permit of such significance.

Important Points:

1. The Laurel View River and the river system between Liberty County and Bryan County is not a river system as typically defined but actually a “tidal basin,” without any material volume of water flowing to or through the Laurel View River or the St. Catherines Sound Estuary to the Atlantic Ocean.
2. The flow of saltwater in this tidal basin is caused by a bi-directional tidal flow from St. Catherines Sound inland to and from inland tributaries to St. Catherines Sound. This tidal flow causes water levels to rise and fall in the Laurel View River and St. Catherines Sound Estuary over 7 feet from low tide to high tide and from high tide to low tide approximately every 6 hours.

3. As a result of the generally captive flow of saltwater in this tidal basin, a primary concern is that a concentration of treated freshwater discharged into this pristine saltwater environment will create an ever-expanding pool of freshwater which will forever alter salinity levels resulting in a dramatic change in an evolved ecosystem which would destroy the environment for saltwater organisms in this area and ultimately the region.
4. Environmental problems in the tidal basin would obviously be exacerbated in the event pollutants were accidentally discharged, causing the toxic effect and impact of pollution to do damage over an extended period of time due to the inability for the pollution to be disbursed and further diluted as would be the case if discharged into a free flowing river of water which ultimately mixes with the waters of the Atlantic Ocean or another larger body of water.

Next Steps: The EPD received sufficient public comments to warrant an informational hearing and public hearing to be scheduled on January 27, 2009 as follows to present details and address issues associated with the LCIA wastewater treatment plant and discharge permit.

Time: Informational Meeting - 7:00 PM to 8:00 PM
Public Hearing - 8:00 PM to the conclusion of the meeting

Date: Tuesday, January 27, 2009

Location: Midway Civic Center
Midway City Hall
9397 E. Oglethope Highway
Midway, Georgia 31320
Phone: (912) 884.3344
Fax: (912) 884.5107